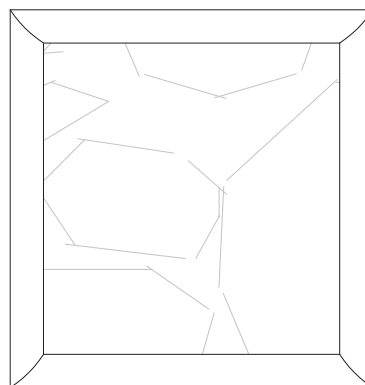


Adone

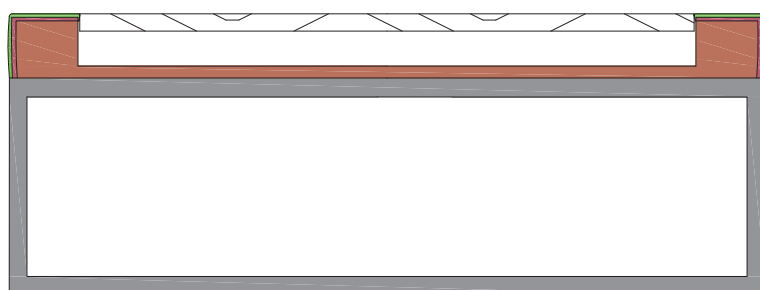
coffee table

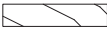






Struttura: struttura in legno massello e multistrato, ricoperta con poliuretano espanso 75/SR, e rivestita con fibra poliestere 100 gr/m². Base in acciaio con finitura cromo lucido.

Structure: *frame with solid wood and multilayer wood, padded with polyurethane foam 75/sr and covered polyester fibre 100 gr/m². Base is made of metal with bright chrome finish.*

Piano: piano in marmo.
Top: top in marble.



-  Marmo
Marble
-  F.P. 100 gr/ m² + vellutino.
P.F. 100 gr/m² + velveteen.
-  Poliuretano 75/SR (14,0 kPa)
Polyurethane 75/SR (14,0 kPa)
-  Struttura in legno massello e multistrato
Frame in solid and multilayer wood
-  Base in acciaio con finitura cromo lucido.
Steel base with bright chrome finish.